



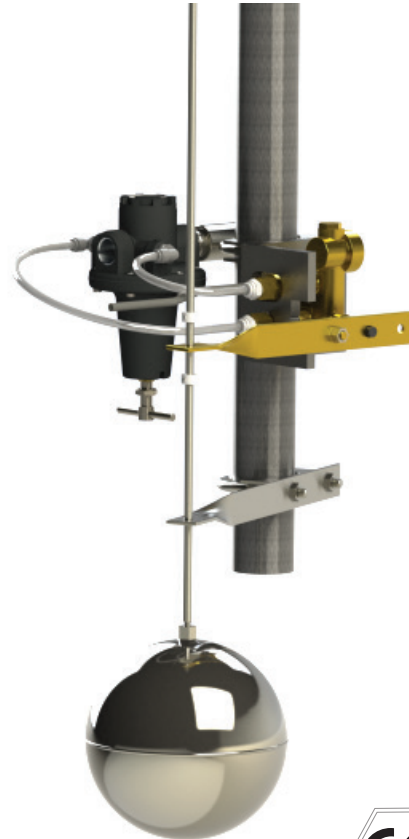
Liquid Level Control

AIR OPERATED DOUBLE DIAPHRAGM PUMP ACCESSORY

The FTI Air Liquid Level Control is a pneumatic/mechanical device that will automatically turn a pump on and off as the liquid level changes.

Specifications

- Completely pneumatic/mechanical operation.
- Automatic operation after initial set up.
- Float level controls on/off of air supply to pump.
- Easy set up for either high level on/low level off or low level on/high level off.
- Out of the box capable to control liquid level operating range from a couple inches to 6 feet. Additional guide rods available to extend range to 10 feet.
- Air flow through valve up to 125 CFM.
- Max inlet air pressure 120 PSI (8.3 BAR). Observe pump limits if unregulated air goes from level control to pump.
- Recommended minimum 20 PSI (1.4 BAR) inlet air to unit.
- Device air outlet must connect to pump or device that creates at least 5 PSI (0.4 BAR) back pressure for unit to operate properly.
- All 304 stainless steel or polypropylene wetted parts.
- Mounts to standard 1-1/2" pipe.



Advantages

- More reliable valve actuator – uses ball detent that moves over a wave shape versus a cone that moves into two drill points.
- Guide rod uses stainless steel rods with male/female threads. Eliminates connector collars allowing liquid level travel to be from a couple inches to 6 feet (5 cm to 183 cm) versus competitor's liquid level travel limited to 3 feet (91 cm).
- Pipe and mounting bracket are stainless steel versus plated steel.

WITH POLYPROPYLENE FLOAT



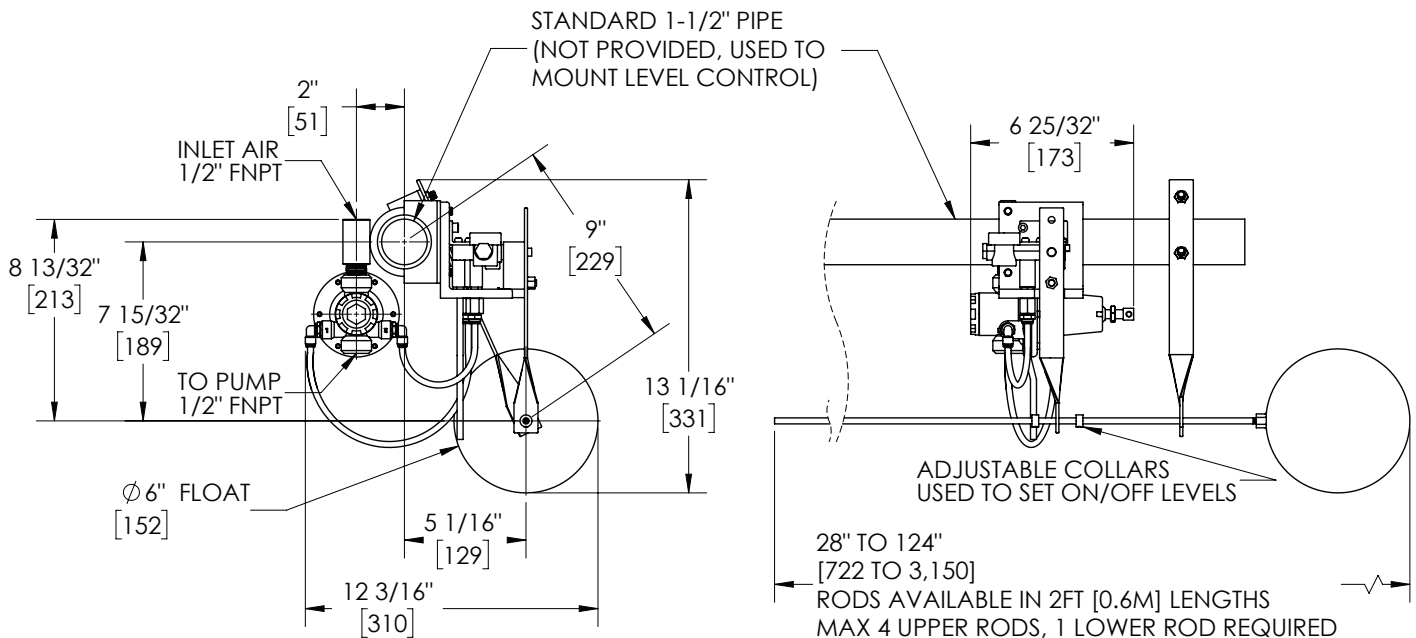
WITH STAINLESS STEEL FLOAT



Operation

- A stainless steel or polypropylene float ball is connected to a guide rod. The guide rod passes through a hole in the control valve's level arm.
- The guide rod has two shaft collars to be set at desired locations for on/off levels. One is set above the level arm and the other below.
- When the float ball rises or falls the shaft collar switches the position of the control valve which turns the air supply to the pump on or off.

Dimensions



FTI AIR

921 GREENGARDEN ROAD ERIE, PA 16501

Tel: (800) 934-9384 • Fax: (814) 459-3460

www.FTIAIR.com

